



Aldreds
Estate Agents

30B Suffolk Road

With Sea views, Lowestoft, NR32 1DZ

Asking Price £145,000



30B Suffolk Road

Lowestoft, NR32 1DZ

*** STUNNING SEA AND RIVER VIEWS *** Aldreds are delighted to offer this stunning first floor apartment which provides some of the best sea and dockland views within Suffolk and Norfolk. This stunning property has been fitted and decorated to a good standard throughout and offers spacious accommodation including a large lounge/diner with study area spacious kitchen/diner, shower room, three generous sized bedrooms and benefits from central heating and uPVC double glazed sash windows. Within a very short walk there is the award winning south Lowestoft beach along with the railway station and Lowestoft town centre. This apartment would be ideal as a family home, holiday investment or second home. It really is one to be seen with quite simply beautiful water views.

Basement

Storage room housing meters.

Shared Entrance Hall

Entrance lift to all floors, Lift leads directly into private hallway.

Private Hallway

Laminate flooring, flat plastered and coved ceiling, radiator, power points.

Lounge

15'5" x 16'0" (4.70 x 4.89)

Laminate flooring, large aspect sealed unit double glazed sash style window with panoramic views over the harbour, sea, river and docks. power points, radiators, modern living flame electric fire, T.V point.

Open Plan Office/Dining Area

4'7" x 7'8" (1.4 x 2.36)

Laminate flooring, sealed unit double glazed sash style window, radiator, power points, T.V point, telephone socket.

Kitchen/Diner

12'10" x 12'1" (3.92 x 3.69)

Vinyl flooring, modern fitted kitchen with a range of modern fitted appliances including dishwasher, washing machine, fridge/freezer, integral Neff electric oven with matching four burner ceramic hob, stainless steel extraction cooker hood, tiled splash backs, ample space for dining table and chairs, radiator, further full length cupboard housing the electric consumer unit, large aspect sealed unit double glazed sash style window providing views of the sea, river and docklands.





Shower Room

Timber effect vinyl flooring, modern fitted shower suite comprising a double fully tiled shower cubicle enclosed by sliding glass screen doors, pedestal sink, low level W.C, full length heated towel rail, extractor fan, sealed unit double glazed window, part tiled walls.

Bedroom 1

12'8" x 9'10" (3.88 x 3.02)

Laminate flooring, flat plastered and coved ceiling, sealed unit double glazed sash style window, radiator, power points, full length fitted cupboard/wardrobe.

Bedroom 2

13'3" x 6'7" (4.06 x 2.01)

Laminate flooring, flat plastered and coved ceiling, power points, radiator, Upvc sash style window, telephone socket.

Bedroom 3

13'1" x 11'4" (4.01 x 3.47)

Laminate flooring, flat plastered and coved ceiling, power points, radiator, T.V point.

Outside

There is a communal bin area and also a parking area providing off road parking.

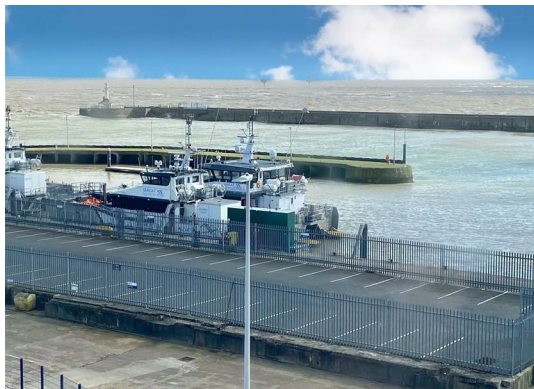
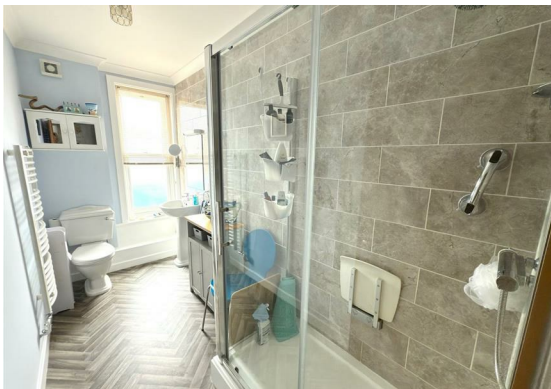
Outgoings And Lease/Freehold

20% Share Of The Freehold

Service Charge £1850 Per Annum (Approx)

Council Tax Band - A

Ref: L2244/04/25



Floor Plan

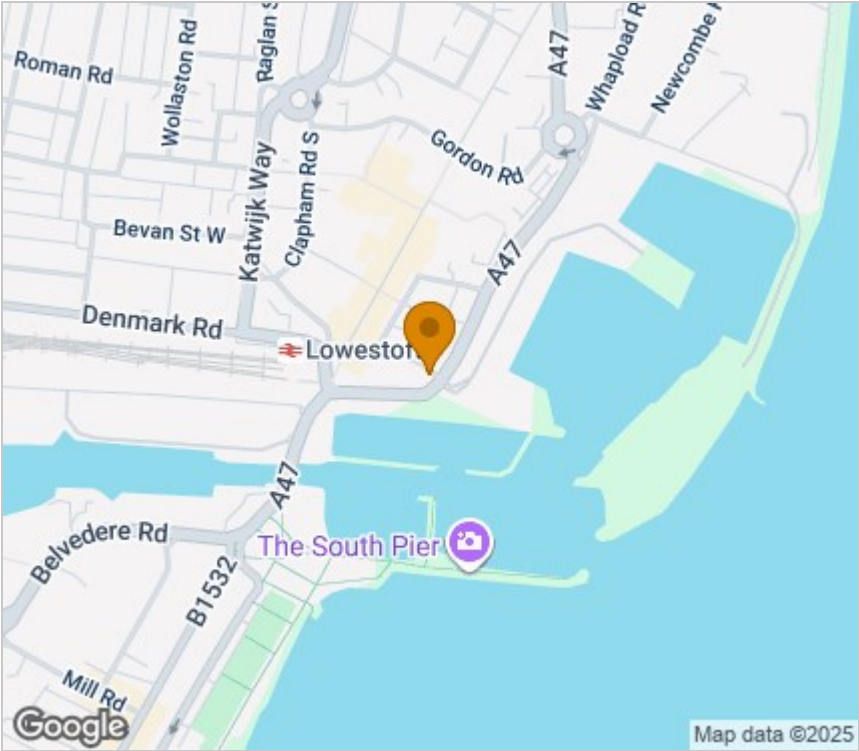


Viewing

Please contact our Aldreds Lowestoft Office on 01502 565432 if you wish to arrange a viewing appointment for this property or require further information.

Disclaimer
These particulars are issued on an understanding that all negotiations shall be conducted through Messrs. Aldreds. Please note: Messrs. Aldreds for themselves and for the vendors or lessors of this property whose agents they are given notice that: 1. Particulars are set out as a general outline only for guidance of intending purchasers or lessees, and do not constitute nor constitute part of, an offer or contract. 2. All descriptions, dimensions, references to condition and necessary permissions for use and occupation, and other details are given without responsibility and any intending purchasers or tenants should not rely on them as statements or representations of fact but must satisfy themselves by inspection or otherwise as to the correctness of each of them. 3. No person in the employment of Messrs. Aldreds has any authority to make or give any representation or warranty whatever in relation to this property. 4. If you are proposing to visit the property and are travelling some distance please check with Aldreds on the issue of availability prior to travelling. 5. Aldreds Property Consultants and associated services may offer additional services to the prospective purchaser for which they will be entitled to receive a commission. Aldreds are pleased to be working with Mortgage Advice Bureau. They're an award-winning mortgage broker with over 1,400 advisers across the UK, and have access to over 12,000 mortgage products from over 90 lenders. Aldreds Estate Agents Ltd receive a commission of £200 on each completed case. Your home may be repossessed if you do not keep up repayments on your mortgage. There may be a fee for mortgage advice. The actual amount you pay will depend upon your circumstances. The fee is up to 1%, but a typical fee is 0.3% of the amount borrowed. Mortgage Advice Bureau is a trading name of Mortgage Seeker Limited which is an appointed representative of Mortgage Advice Bureau Limited and Mortgage Advice Bureau (Derby) Limited which are authorised and regulated by the Financial Conduct Authority. Mortgage Seeker Limited Registered Office: Lovewell Blake, Sixty Six North Quay, Great Yarmouth, Norfolk, NR30 1HE. Registered in England Number: 03721415. 6. Potential purchasers should check with their providers that the broadband and mobile phone coverage they would require is available.

Area Map



Energy Efficiency Graph

